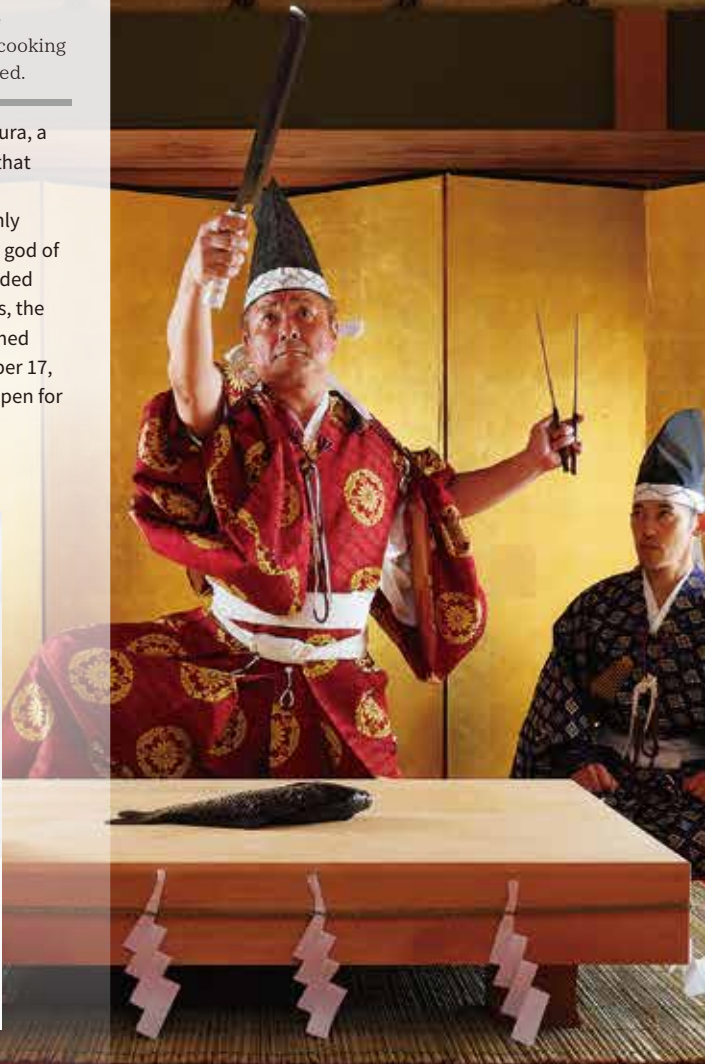


## “Knife Ceremony”

at Takabe Shrine  
where the only god of cooking  
in Japan is enshrined.

Takabe Shrine sits in Chikura, a town in Minamiboso City that retains its fishing village atmosphere. This is the only shrine in Japan where the god of cooking is enshrined. Handed down for over 18 centuries, the Knife Ceremony is performed annually on May 17, October 17, and November 23 and is open for public viewing.

An 18 century-old tradition,  
Visit the god of cooking in Chikura, Minamiboso City.



## Minamiboso

located to the south of Tokyo

General Incorporated Association

### Minamiboso City Tourism Association

89-3 Haraoka, Tomiura-cho, Minamiboso City,

Chiba, Japan 299-2403

TEL: 0470-28-5307

<https://www.cm-boso.com/>



Official Site



Inquiry Form

- Historic Places
- Views
- Activities
- Fruit Picking
- Gourmet
- Access

MINAMI BIYORI

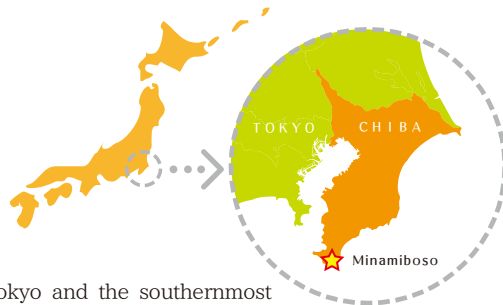
TRAVEL GUIDE

# Minamiboso

located to the south of Tokyo

# Welcome to Minamiboso

located to the south of Tokyo



South of Tokyo and the southernmost region on the Boso Peninsula, Minamiboso is known as the region of flowers and delicious food. Enjoy the slow pace of life while surrounded by the sea and the mountains. From beautiful locations used in filming to historical shrines and temples, one day is simply not enough to experience all that Minamiboso has to offer. Why not come down to this holiday destination just 90 minutes south from the heart of Tokyo?

\* The information here is current as of December 1, 2021.  
The contents are subjected to change without notice.  
\* All photographs are used for illustration only.

Visit the "Enjoy MINAMIBOSO"

website for more information!

(In Japanese only)



## Minamiboso Temples and Shrines

# Historic places



The knife ceremony hailing from the Heian period, famous temples housing important cultural properties, the largest stone Buddha statue in Japan... Enjoy a different facet of Minamiboso, dyed in history and culture!

### Komatsuji Temple

Trending among goshuin temple seal enthusiasts! Charm beyond charms and famous for its fall colors.



The seated statue of an eleven-faced Kannon is one of the many important cultural properties housed in the 'Buddhist Treasury' on the estate. This is also a popular spot to pray for children and for safe childbirth, as well as to add Komatsuji Temple's seal to your collection!

- ① 1057 Onuki, Chikura-cho, Minamiboso City  
[15 minutes from Chikura Tourist Information Center by bicycle]
- ② 0470-44-2502
- ③ Free to enter

### Nozoin Temple

The backdrop of *karasu tengu* legends, pray for your pet's health here too!



One of the Higashikuni Flower Temples, flowers blossom in Nozoin Temple all year round. The temple is at the foot of the mountains where the legend of a *karasu tengu* goblin remains, and is the place to pray at for your pet's health and longevity.

- ① 146 Kotto, Chikura-cho, Minamiboso City  
[15 minutes from Chikura Tourist Information Center by bicycle]
- ② 0470-44-0588
- ③ Free to enter

### Ishidoji Temple

1300-year-old home to many important cultural properties.



With a long history and surrounded by nature, Ishidoji Temple has many local devotees. The temple grounds extends deep into the forest which is well-known as a spiritual spot. The temple also houses many important cultural properties, and is a paradise for history buffs.

- ① 302 Ishido, Minamiboso City  
[50 minutes from Chikura Tourist Information Center by bicycle]
- ② 0470-46-2218
- ③ Free to enter

### Takabe Shrine

Where the only god of cooking in Japan is enshrined. Pray for better culinary skills!



Members of the culinary industry and miso and soy sauce breweries gather to worship the god of cooking at Takabe Shrine. The Knife Ceremony which originated in the 880s during the Heian period is still performed here every year.

- ① 164 Minamiasai, Chikura-cho, Minamiboso City  
[10 minutes from Chikura Tourist Information Center by bicycle]
- ② 0470-44-5625
- ③ Free to enter

### Nihonji Temple

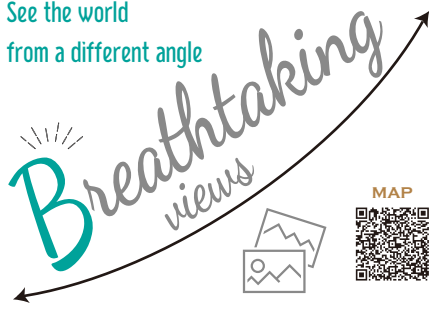
Admire the tallest seated Buddha rock carving in Japan.



Nihonji is a temple in the south of Kyonan with 1300 years of history. At 31m, the seated Buddha statue in the temple grounds is far bigger than those in Nara and Kamakura. Take a walk through nature and see the 30m-tall Goddess of Mercy statue and the '1500 Arhat' statues too.

- ① 184-4 Motona, Kyonan, Awa District  
[90 minutes from Minamiboso City Tourist Information Center by bicycle]
- ② 0470-55-1103
- ③ Entrance fee: ¥600 per adult

See the world  
from a different angle



Take a trip and see a different view from your everyday. All the SNS-worthy scenery concentrated in Minamiboso. Experience your breathtaking moment!

## Mount Iyogatake

Less than 1/10th of the original, but that's the Boso's 'Matterhorn'.



The only mountain in Chiba with the Japanese character for "peak" in its name, Iyogatake's shape brings to mind the Matterhorn. The panoramic view from the top at an elevation of 336m is highly recommended.

- ④ Arakawa, Minamiboso City  
[60 minutes to the hiking trail entrance from Minamiboso City Tourist Information Center by bicycle]
- ④ Iwai Minshuku Association (Tomiyama Walking Center): 0470-57-2088

## Haraoka Pier (Okamoto Pier)



This retro wooden pier illuminated by naked bulbs extends into the horizon!

Step into a movie scene at this trending, scenic spot in Minamiboso City.



One of the few wooden sea piers in Japan, Haraoka pier has been featured in many commercials, dramas, and films. You may catch the sun set beautifully behind the silhouette of Mount Fuji on a good day. If not, just take a seat and relax.

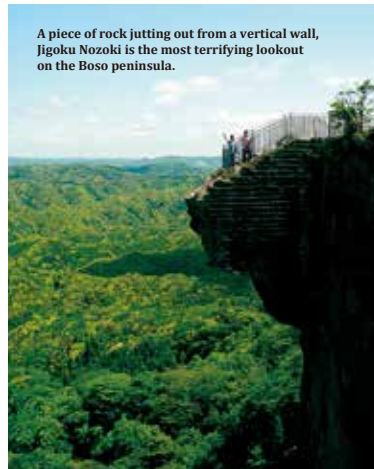
- ④ Haraoka Chisaki, Tomiura-cho, Minamiboso City  
[5 minutes from Minamiboso City Tourist Information Center by bicycle]
- ④ Minamiboso City Tourism Association: 0470-28-5307

## Take Nokogiriyama Ropeway up to look down from Jigoku Nozoki

Take the ropeway up 329m to Jigoku Nozoki, Boso peninsula's scariest lookout.



Mount Nokogiri served as a stone quarry from somewhere around the 15th century until 1985. Today, it boasts the top-class view in the Boso region. There's lots to see, including Japan's largest seated stone Buddha and Jigoku Nozoki (Hell Peek Point).



A piece of rock jutting out from a vertical wall, Jigoku Nozoki is the most terrifying lookout on the Boso peninsula.

- ④ 4052-1 Kanaya, Futtsu City  
[90 minutes from Minamiboso City Tourist Information Center by bicycle]
- ④ Nokogiriyama Ropeway Co., Ltd.: 0439-69-2314
- ④ 9 a.m. - 5 p.m. (until 4 p.m. in winter)

## Kajika Bridge, Sawayama Fudo-do temple

Cross the Ghibli-esque ravine to the temple across the only suspension bridge in Minamiboso.



Before reaching the temple, look down from the suspension bridge and see the colors of the ravine and waterfall meld into a picturesque view. Take the steps down to the ravines for a walk and be spirited away to a vibrant world amongst a lush forest.

- ④ Sawayama, Kamitakida, Minamiboso City  
[60 minutes from Minamiboso City Tourist Information Center by bicycle]

## Nojimasaki Lighthouse

This beauty known as the 'white bird lighthouse' is one of Japan's first eight Western lighthouses.



Constructed in 1896 based on a design by French engineer Verry, Nojimasaki lighthouse is one of Japan's first eight Western lighthouses. The contrast of this chalk-white lighthouse against the blue ocean makes for a pretty picture, as does the "Lover's Bench" at the very tip of the peninsula.

- ④ 630 Shirahama, Shirahama-cho, Minamiboso City  
[50 minutes from Chikura Tourist Information Center by bicycle]
- ④ Nojimasaki Lighthouse museum Kirarin-kan: 0470-38-3231
- ④ 9 a.m. - 4 p.m. (October - April), 9 a.m. - 4:30 p.m. (May-September)

## Gake Kannon (Daifukuji Temple)

An incredible view of Tateyama Bay from Kannon-do temple hall!



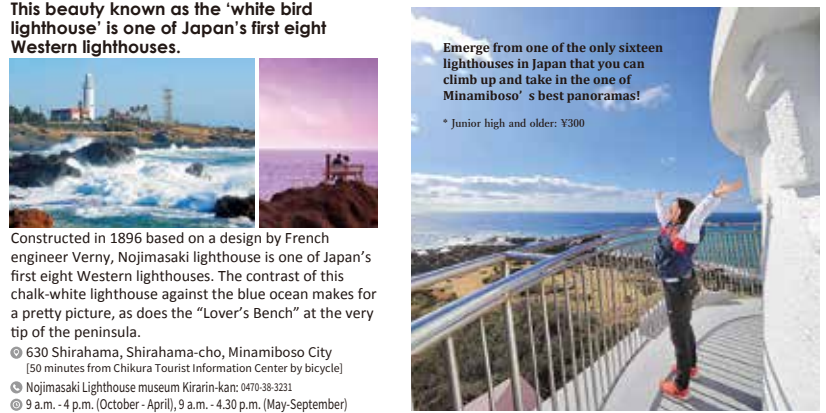
## Hokkezaki

See a real life ukiyo-e at a shore with strong ties to an eminent Buddhist priest of the Kamakura period.



Hokkezaki is said to be named after the *Hokke-kyo* Lotus Sutra which the priest Nichiren chanted to pray for safe sea voyages there. Be overwhelmed by the *ukiyo-e* art-like beauty of the waves battering Suzume-jima island and Funamushi-jima island.

- ④ Namuya Chisaki and Haraoka Chisaki, Tomiura-cho, Minamiboso City  
[9 minutes from Minamiboso City Tourist Information Center by bicycle]



Emerge from one of the only sixteen lighthouses in Japan that you can climb up and take in the one of Minamiboso's best panoramas!

\* Junior high and older: ¥300

Wonder at the sight of a rare temple platform built midway up against a perpendicular cliff face.



Daifukuji temple was built halfway up the cliff in 717 by Gyoki to pray for fishermen's safety and plentiful bounty. Don't miss the view from the vermilion platform down into Tateyama Bay and the magnificent sunset views.

- ④ 835 Funakata, Tateyama City  
[10 minutes from Minamiboso City Tourist Information Center by bicycle]
- ④ 0470-27-2247
- ④ Free to enter

Travel widely,  
play heartily

# Activities



Explore every nook and cranny in Minamiboso, from the sea to the mountains and through narrow alleyways.  
You might just discover something unique and marvelous!

## Take a walk through Cape Taibusa

Protruding into the bay, the cape is a nature wonderland.



Take a walk through the lush forest, play on the rocky beach, cycle through the cape... From spectacular views on the observatories to historical WWII remains, there's something for everyone here at Cape Taibusa.

- ④ 1212-29 Tadora, Tomiura-cho, Minamiboso City  
[20 minutes from Minamiboso City Tourist Information Center by bicycle]

## "Minamiboso Kurukuru Shararan" Bicycle Rental

Widen your area of movement and delve deeper into the region with ease on a pedal-assist electric bicycle.



¥1,000 per day per bicycle [tax inclusive]

\* An additional ¥1,000 will be charged per bicycle if you choose to leave it anywhere other than the designated return locations. Please pay this at the rental location.



- ④ 89-3 Haraoka, Tomiura-cho, Minamiboso City  
[Minamiboso City Tourist Information Center]  
④ 0470-28-5307  
④ 9 a.m. - 5 p.m.
- ④ 2079 Seto, Chikura-cho, Minamiboso City  
[Chikura Tourist Information Center]  
④ 0470-44-3581  
④ 9 a.m. - 5 p.m.

To fully experience Minamiboso's rich nature...

Visit "Enjoy MINAMIBOSO" for more information and to make reservations online for the Immersive Tourism Programs!



## Golfing at Cosmo Classic Club

A strategic course through sprawling nature. Be the very best, like no one ever was!



Seasonal flowers and birdsong in the foreground, Mount Iyogatake and the relaxing Tateyama Bay sea breeze in the background... Have a relaxing golf holiday at Cosmo Classic Club. Get your money's worth of play time with the seasonal plans.

- ④ 2-404 Hiratsuka Otsu, Minamiboso City  
[90 minutes from Minamiboso City Tourist Information Center by bicycle]  
④ 0470-58-0311  
④ Usually opens from 6.45 a.m.

## Take a cruise on the Tokyo Bay Ferry

Take the Tokyo Bay ferry and enjoy the view of the Boso peninsula from the sea.



Watch ships cross paths, admire Mount Fuji and the Boso peninsula, and take in other beautiful sights from the comfort of the 40-minute ferry cruise across Tokyo Bay from Kurihama to Kanaya.

- ④ 4303 Kanaya, Futsu City  
[80 minutes from Minamiboso City Tourist Information Center by bicycle]  
④ Tokyowan Ferry Co., Ltd.: 0439-69-2111  
④ From Kanaya Port: 6.20 a.m. - 7.30 p.m.

Minamiboso:  
the ultimate fruit paradise

# Fruit picking



Minamiboso has the perfect climate for producing fruits of high quality.  
Taken care of meticulously, this level of quality cannot be found anywhere outside of Japan!

## Loquat Picking

Enjoy Boshu loquats at one of Japan's leading loquat producing towns.



Large, fleshy, and juicy, Minamiboso-produced Boshu loquats have been presented to the royal family every year since 1909. The harvest season is merely two months, so come down from May to June to enjoy this luxurious seasonal fruit straight off the branch!

- ④ 89-3 Haraoka, Tomiura-cho, Minamiboso City  
[Minamiboso City Tourist Information Center]  
④ 0470-28-5307  
④ 9 a.m. - 5 p.m.

## Melon Picking

A rare chance to see how the top-tier Chiba Aqua Melon is grown.



Melon picking is available all year round at Yasuda Melon Farm. \* There will be a separate charge for the melons that you picked yourself.

- A Plan: ¥600 (tax inclusive)  
comes with 1/4 of a melon for tasting
- B Plan: ¥1,100 (tax inclusive)  
comes with half a melon for tasting

- ④ 27 Seto, Chikura-cho, Minamiboso City  
[10 minutes from Chikura Tourist Information Center by bicycle]  
④ 0470-44-0820  
④ 9 a.m. - 4 p.m.

## Strawberry Picking

Spring in Minamiboso? Definitely stuff yourself with scrumptious strawberries!



[January - early May]

A spring tradition in Minamiboso is strawberry picking! Indulge in sweet sweet all-you-can-eat Japanese strawberries.

- ④ 89-3 Haraoka, Tomiura-cho, Minamiboso City  
[Minamiboso City Tourist Information Center]  
④ 0470-28-5307  
④ 9 a.m. - 5 p.m.

## Boshu loquat products

Highly recommended loquat souvenirs from Roadside Station Tomiura Biwa Club.



Biwa Club regularly releases premium products such as baumkuchen, castella cake, juice, and jam made from Minamiboso-produced loquats. Check out these Biwa Club-original loquat products if you're in the area!

- ④ 123-1 Aoki, Tomiura-cho, Minamiboso City  
[1 minutes from Minamiboso City Tourist Information Center by bicycle]
- ④ Roadside Station Tomiura Biwa Club: 0470-33-4611
- ④ Weekdays: 10 a.m. - 5 p.m.  
Weekends and PH: 9.15 a.m. - 5 p.m.

## Mikan Picking

The best environment for cultivating mikans. Eat all-you-can Unshu mikans straight off the branches!



Enjoy eating different citrus such as Unshu mikans, Hassaku mikans, Amanatsu mikans, and lemons in different seasons off the branch. You can also buy and bring home the fruits that you picked.  
[October 1 - April 30] Junior high and older: ¥500

- ④ 1494 Kubo, Chikura-cho, Minamiboso City  
[14 minutes from Chikura Tourist Information Center by bicycle]
- ④ Chikura Mandarin Center: 0470-44-0780  
④ 9 a.m. - 5 p.m.

Come hungry!

Gourmet



Calling all gastronomes! Come hungry! Don't hesitate. Come down to Minamiboso and taste the delicious food made with the abundant year-round blessings from the sea and the mountains!

## Ramen Furari

Impact! Visual! Flavor!  
End your journey with Furari Ramen!



If you want to eat delicious ramen that will be memorable, do not hesitate going to "Furari." It is a hot topic shop serving "Nori Zanmai Shio Ramen" seen in the photo and "Chashu Ippon Boso Ramen" that was introduced on TV.

- 1900 Nibu, Minamiboso City (2F, Roadside Station Furari Tomiyama) [40 minutes from Minamiboso City Tourist Information Center by bicycle]
- 0470-57-2920
- Weekdays: 9 a.m. - 6 p.m.
- Weekends and PH: 8.30 a.m. - 6 p.m.

## Jiroemu



Have a hearty Japanese lunch in a 300-year-old peasant's house.



Organic vegetables and rice grown with clean water and rich soil. Delicious eggs from cage-free chickens. Have a meal made from painstakingly raised and grown natural ingredients in a 300-year-old peasant's house.

- 2011 Yamana, Minamiboso City [45 minutes from Minamiboso City Tourist Information Center by bicycle]
- 0470-36-3872
- 10 p.m. - 3 p.m. [Irregular closing days][By reservation only]

## Tenzen

Tenzen is a charcoal-grilled cuisine restaurant set in an old samurai warrior's house.



Hidden in the mountains where sword masters were trained, Tenzen proves that the tougher the journey, the better the food. There's nothing here but trees in the mountain; all the better to focus on your food in a private room!



- 1822 Miyashita, Minamiboso City [65 minutes from Chikura Tourist Information Center by bicycle]
- 0470-46-4137
- 11 p.m. - 3 p.m., 5 p.m. - 8 p.m. [Irregular closing days][By reservation only]

## Namura

Winner of local and international awards! Astonishingly delicious anchovy cuisine created by a former fisherman.



"Namura" means 'school of fish' in the Boshu dialect. The best-seller among all the set meals and side dishes is the *Hishiko-zuke* (marinated Japanese anchovy) set meal. You can also bring home some original award-winning products as souvenirs.

- 196-1 Kaihotsu, Wada-cho, Minamiboso City [25 minutes from Chikura Tourist Information Center by bicycle]
- 0470-47-5477
- 11 p.m. - 4 p.m., 4 p.m. - 9 p.m. [call to arrange] [Closed on Wednesdays]

## Daitokuya

The oldest sushi restaurant in Minamiboso, and the original creator of *namero*.



Daitokuya, established 150 years ago, is said to have invented *namero*, a dish made from minced raw fish, which is the soul food of Minamiboso. The simple and quiet atmosphere makes this a great place to relax. Satisfy your cravings with hand-made sushi and the owner's selection of Japanese wine.

- 1079 Minamiasai, Chikura-cho, Minamiboso City [15 minutes from Chikura Tourist Information Center by bicycle]
- 0470-44-1229
- 12 p.m. - 3 p.m., 5 p.m. - 9 p.m. [Closed on Tuesdays]

## Strawberry Pot

*Amits* made from hand-picked *tengusa* seaweed at a cafe owned by an active *ama* diver!



A stylish cafe with an ocean view run by an *ama* free diver who collects, sun dries, and boils down *tengusa* algae to make agar jelly for *amitsu*, a dessert with the jelly cubes, red bean paste and fruits. You can't find such an all-natural, no additive dessert anywhere else!

- 549-1 Kotto, Chikura-cho, Minamiboso City [15 minutes from Chikura Tourist Information Center by bicycle]
- 0470-44-5552
- 11 a.m. - 4 p.m. [Closed on Tuesdays]

## Nansoan

Time-slip into the past! Tantalize your tongue with abalone soba at a popular soba restaurant.

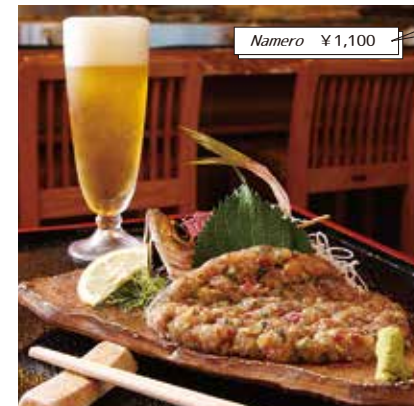


Generous slices of stewed Chikura-harvested abalone with handmade silky smooth soba, the abalone soba is the most popular item on the menu. Taste the sea in this beautiful pairing!

- 2920-2 Seto, Chikura-cho, Minamiboso City [5 minutes from Chikura Tourist Information Center by bicycle]
- 0470-44-2615
- 10.30 a.m. - 3 p.m. [Closed on Thursdays]

## Namero

The oldest sushi restaurant in Minamiboso, and the original creator of *namero*.



## Kimura Peanuts

This peanut soft serve is the very definition of 'rich'!



Kimura Peanuts oversees everything from the planting and production to the sales of their peanuts, ensuring the rich, nutty soft serve ice cream that calls in the crowd.

- 236-3 Shimosanagura, Tateyama City [35 minutes from Minamiboso City Tourist Information Center by bicycle]
- 0470-22-3488
- 9 a.m. - 6 p.m.

Recommended Route

# A trip around Tokyo Bay



Depart from Tokyo Station

8 a.m.

**01** Enjoy **Strawberry Picking**, a Minamiboso City speciality



**02** Try the Chiba Aqua Melon at **Yasuda Melon Farm**



**03** Visit the god of cooking at **Takabe Shrine**



The exclusive hand towel makes for a good souvenir!

**04** Have lunch at **Jiroemu**



Have a hearty, traditional Japanese lunch made from organic rice and vegetables in a 300-year-old peasant's house.

**05** See Mount Fuji floating on Tokyo Bay at **Haraoka Pier** (Okamoto Pier)



The most popular view in Minamiboso City!

**07** Enjoy the panoramic view from **Jigoku Nozoki** on **Mount Nokogiri**



The scariest lookout on the Boso Peninsula!

**06** Dye a handkerchief with loquat leaves and go shopping



How about an ecologically-friendly Boshu *uchiwa* fan too?

**08** Take the **Tokyo Bay Ferry** and traverse Tokyo Bay on the way back!



Return to Tokyo Station

Around 8 p.m.

## ACCESS MINAMIBOSO

### Tokyo Bay Aqua-Line

The 15.1km expressway for automobiles cuts through the middle of Tokyo Bay. The world's largest-scale marine civil engineering project then, it took ten years and a total of ¥1.44 trillion to build.

### CAR

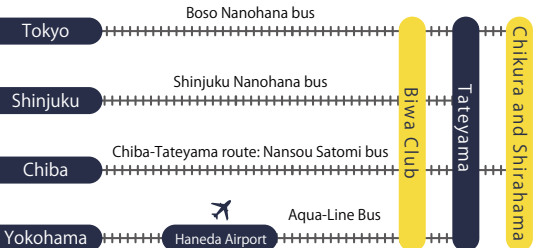
[Approx. 95mins]

Tokyo ————— Minamiboso

Bayshore Route ~ Tokyo Bay Aqua-Line ~ Tateyama Expressway ~ Tomiura IC

### HIGHWAY BUS

[105~120mins]



### TRAIN

[Approx. 130mins]

Tokyo Station — Chiba Station — Tomiura Station

JR Sobu Line Express

JR Uchibo Line

### RENTAL CAR

5-seater economy car from ¥10,800 [Tax inclusive]

◎Receive a ¥2,000 Biwa Club shopping voucher for every full-day rental.

◎Price includes insurance.

[Bring] Driver's license

[Reception counter] Rental: Minamiboso City Tourist Information Center

Return: Toyota Car Rental, Tateyama Station West Exit Office

\* Please make your reservation by 4 p.m. three days before.

\* Refueling charge will be collect separately when the car is returned.

